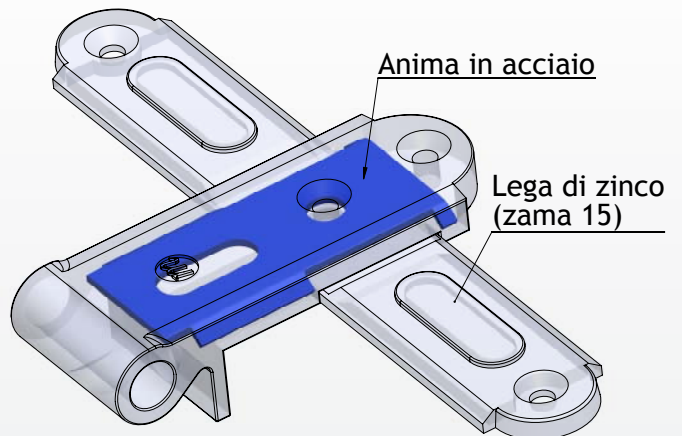
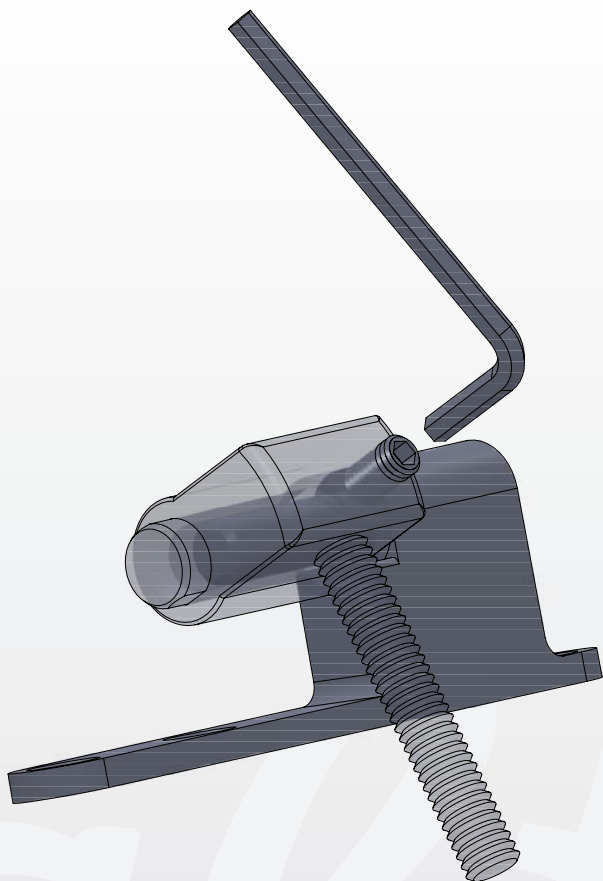
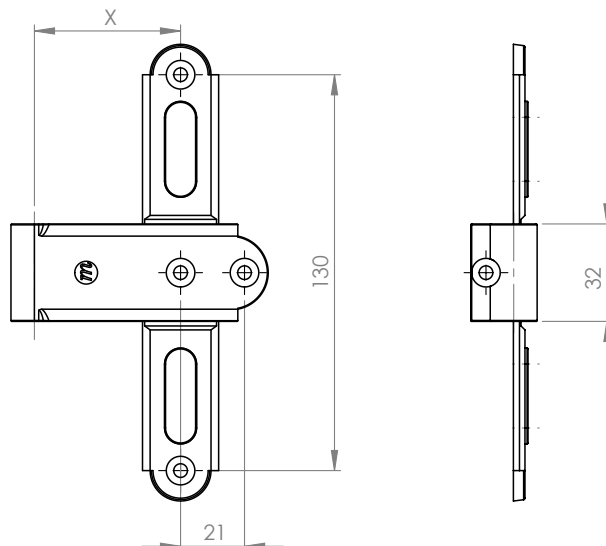
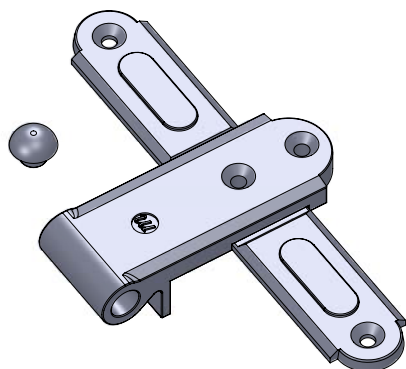
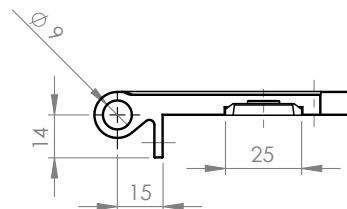


# Cerniere e cardini serie Athena e Nisley




## ATHENA A CROCE

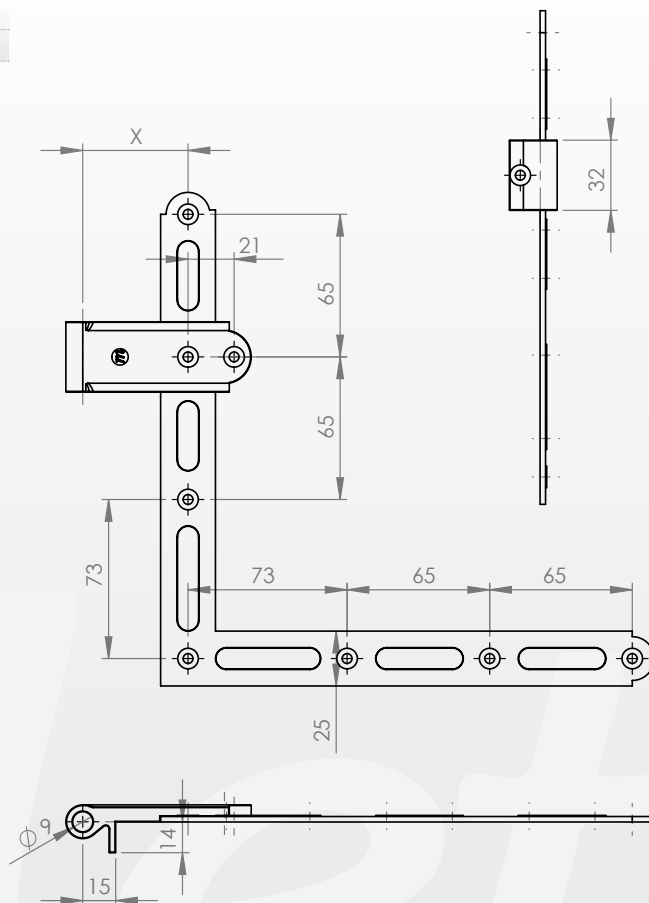
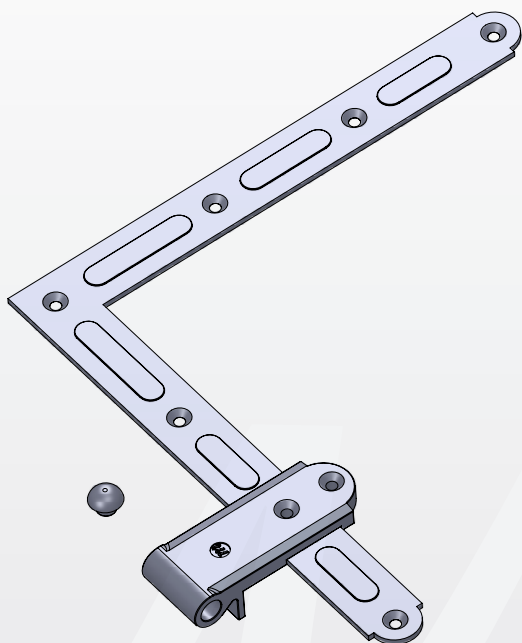
CODICE ARTICOLO		COLORE	X (mm)	QTY.
NUOVO	VECCHIO			
MFC201001.01	RUBAND64	NERO	48	20
MFC201002.01	RUBAND26	NERO	60	20



## ATHENA AD ANGOLO

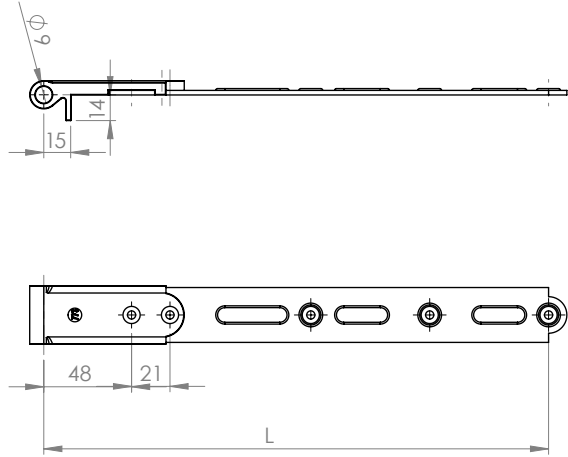
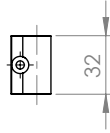
CODICE ARTICOLO		COLORE	X (mm)	QTY(cp.)
NUOVO	VECCHIO			
MFC202001.01	RUBAND65	NERO	48	10
MFC202002.01	RUBAND27	NERO	60	10

 (Cp)= si intende coppia di pezzi dx + sx



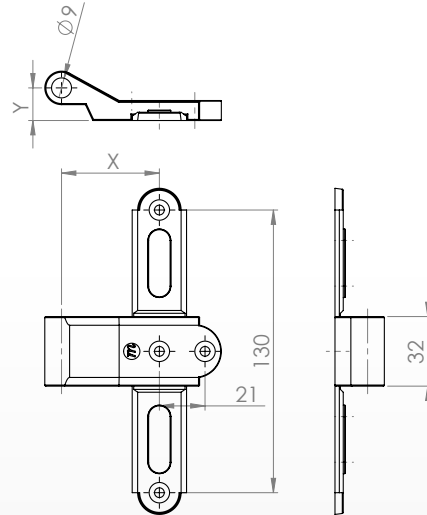
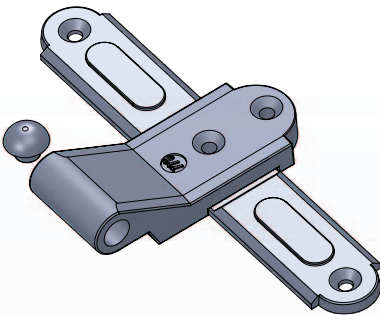
## ATHENA DIRITTA

CODICE ARTICOLO		COLORE	L (mm)	QTY.
NUOVO	VECCHIO			
MFC203001.01	RUBANDL38	NERO	250	20
MFC203002.01	RUBANDL39	NERO	350	20




## ATHENA A FILO A CROCE

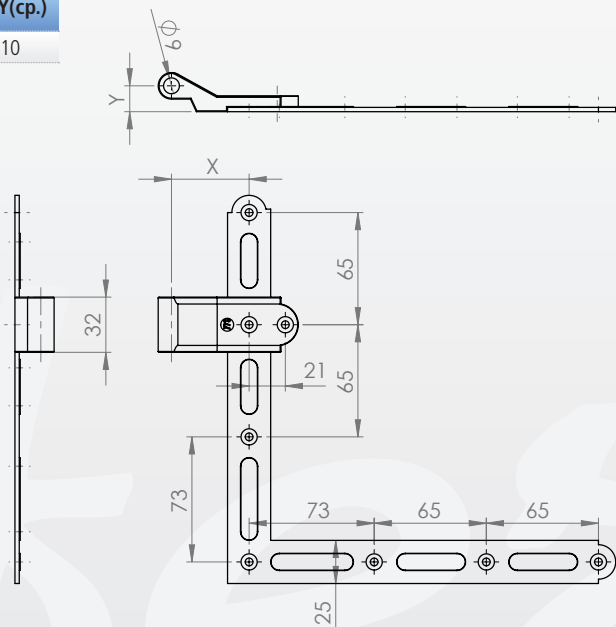
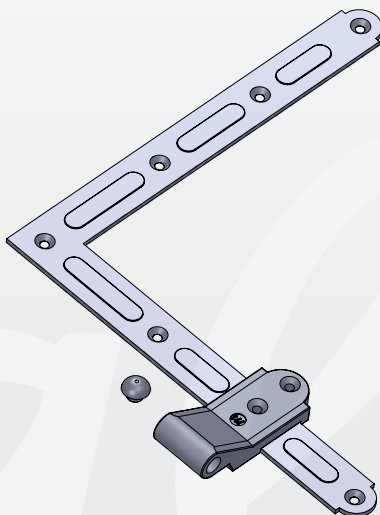
CODICE ARTICOLO		COLORE	X (mm)	Y (mm)	QTY.
NUOVO	VECCHIO				
MFC201003.01	RUBAND21	NERO	45	15	20



## ATHENA A FILO AD ANGOLO

CODICE ARTICOLO		COLORE	X (mm)	Y (mm)	QTY(cp.)
NUOVO	VECCHIO				
MFC205001.01	RUBAND22	NERO	45	15	10

 (Cp)= si intende coppia di pezzi dx + sx



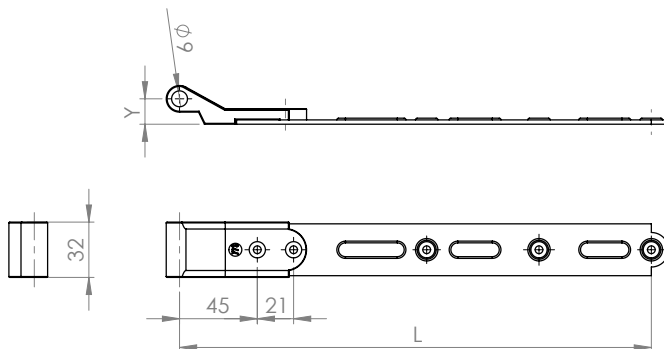
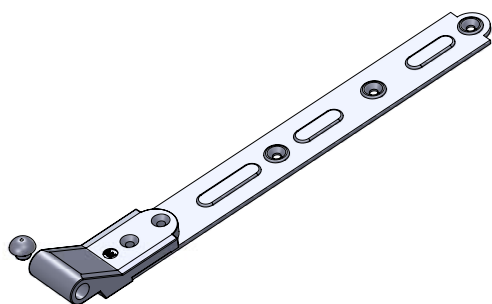
**Cerniere e cardini serie  
Athena e Nisley**

FABBRICA FERRAMENTA PER INFISSI  
38079 TIONE DI TRENTO | Via fabbrica, 54 | Tel. 0465.321134 | Fax 0465.324091 | info@metalfez.info

**Metalfez**

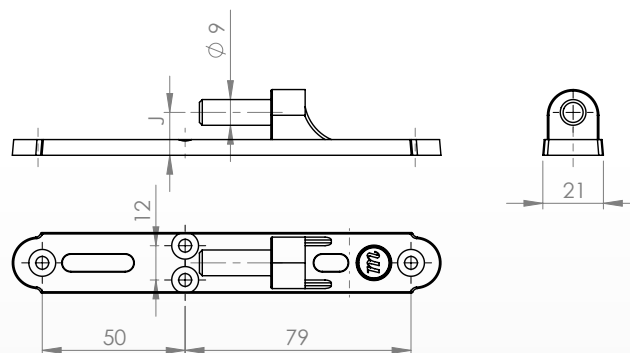
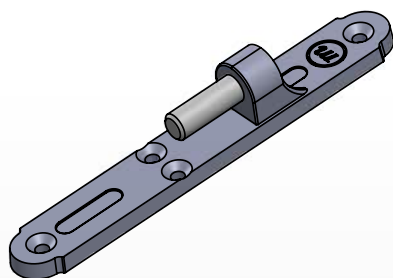
## ATHENA A FILO DIRITTA

CODICE ARTICOLO NUOVO	VECCHIO	COLORE	L (mm)	Y (mm)	QTY.
MFC206001.01	RUBANDL36	NERO	250	15	20
MFC206002.01	RUBANDL37	NERO	350	15	20



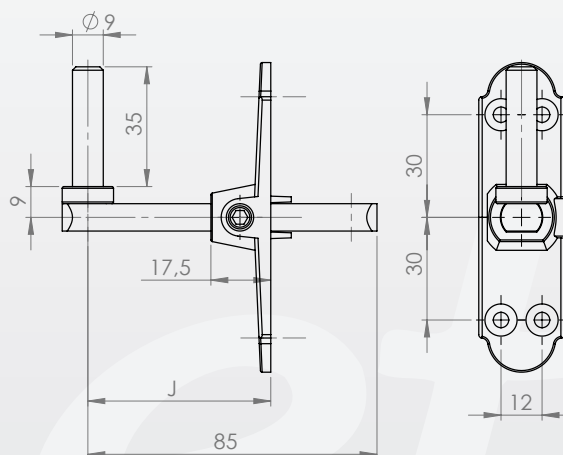
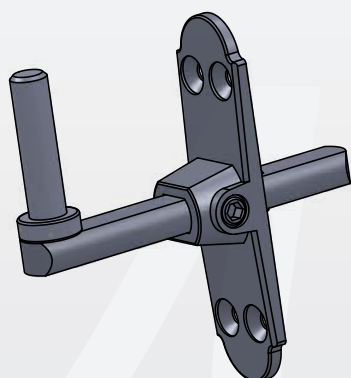
## CARDINE SU PIASTRA

CODICE ARTICOLO NUOVO	VECCHIO	COLORE	J (mm)	QTY.
MFC101001.01	RUCARD23/14	NERO	15	20
MFC101002.01	RUCARD23/15	NERO	16	20
MFC101003.01	RUCARD23/17	NERO	18	20



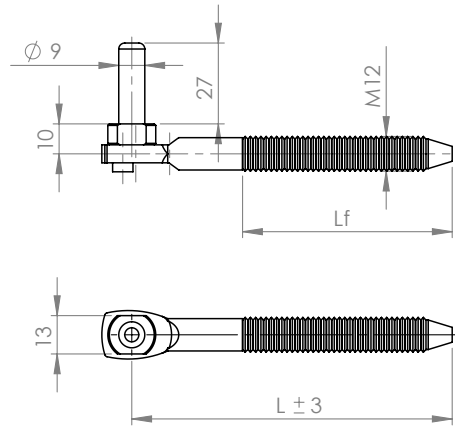
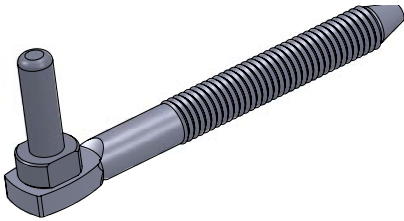
## CARDINE REGOLABILE IN PROFONDITÀ COMPLETO DI SUPPORTO

CODICE ARTICOLO NUOVO	VECCHIO	COLORE	J (mm)	QTY.
MFC207001.01	RUCARD02	NERO	25-60	20



## CARDINE A VITE CON PERNO ECCENTRICO REGOLABILE

CODICE NUOVO	ARTICOLO VECCHIO	COLORE	L (mm)	Lf (mm)	QTY.
MFC102001.01	RUCARD19	NERO	80	60	20
MFC102002.01	RUCARD20	NERO	120	70	20
MFC102003.01	RUCARD29	NERO	140	70	20



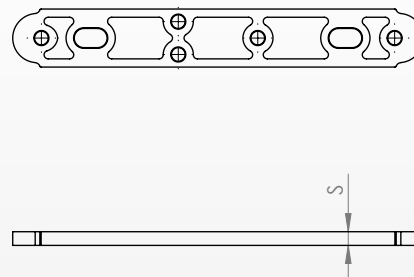
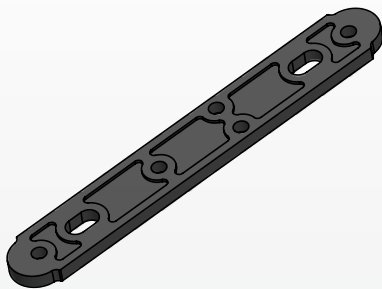
Il perno eccentrico permette la regolazione in orizzontale dell'anta ruotandolo. Per effettuare questa operazione è necessaria una chiave inglese da 13mm

**Cerniere e cardini serie  
Athena e Nisley**

## ACCESSORI

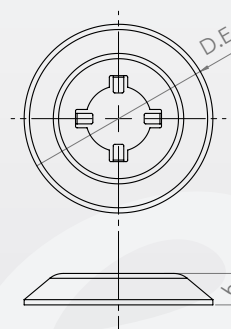
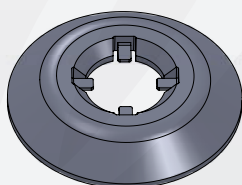
### SPESSORE PER CARDINE SU PIASTRA

CODICE NUOVO	ARTICOLO VECCHIO	COLORE	S (mm)	QTY.
MFC103001.01	RUFERM28	NERO	5	60
MFC103002.01	RUFERM30	NERO	3	60



### RONDELLA COPRIFORO PER CARDINE

CODICE NUOVO	ARTICOLO VECCHIO	COLORE	QTY.
MFD124002.01	RUROND01	NERO	50

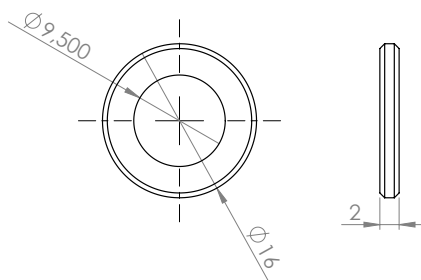
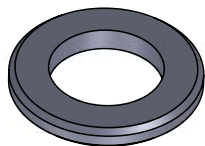


FABBRICA FERRAMENTA PER INFISSI  
38079 TIONE DI TRENTO | Via fabbrica, 54 | Tel. 0465.321134 | Fax 0465.324091 | info@metalfex.info

**Metalfex**

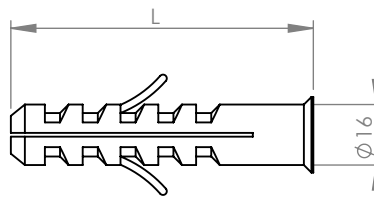
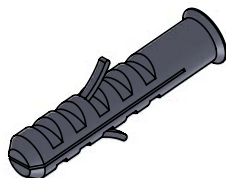
## RONDELLA DI SPESSORAMENTO 16X2

CODICE ARTICOLO		COLORE	QTY.
NUOVO	VECCHIO		
MFC104001.04	RUROND07	ZINCO NERO	50



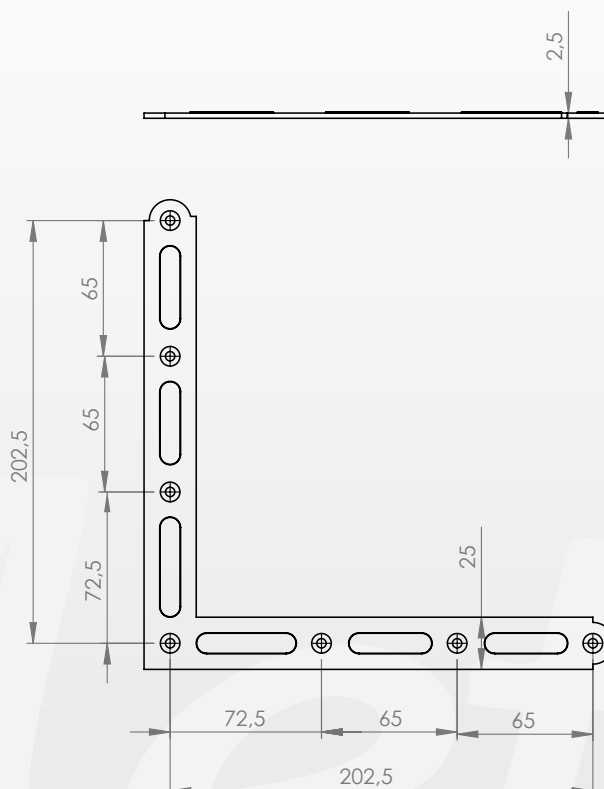
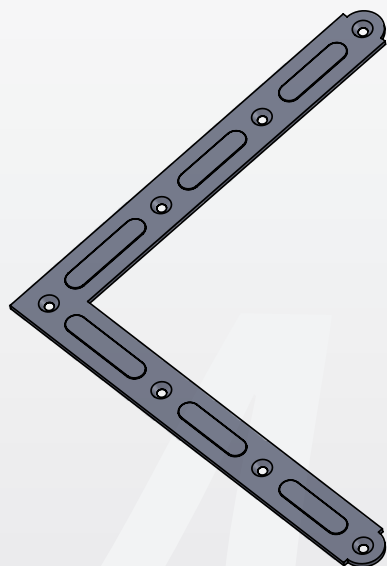
## TASSELLO SHR PER CARDINI A VITE M12

CODICE ARTICOLO		L (mm)	QTY.
NUOVO	VECCHIO		
MFD127001.99	RUTAS02	100	50
MFD127002.99	RUTAS03	135	50



## ANGOLO DI RINFORZO

CODICE ARTICOLO		COLORE	QTY.
NUOVO	VECCHIO		
MFC105001.01	RUBAND24	NERO	20

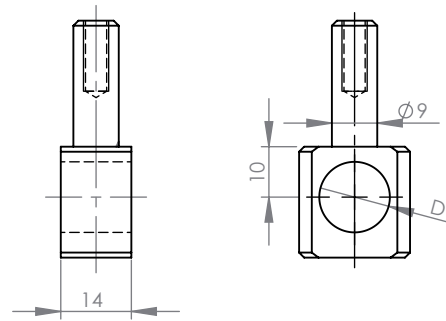
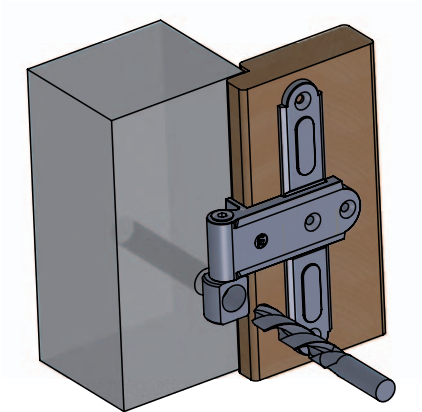
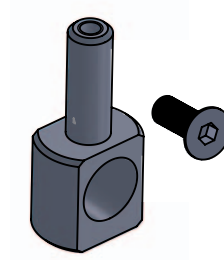


# DIME

Queste dime possono essere utilizzate per predisporre il foro dei CARDINI A VITE ATHENA avendo montato le cerniere ATHENA.

## DIMA DI FORATURA

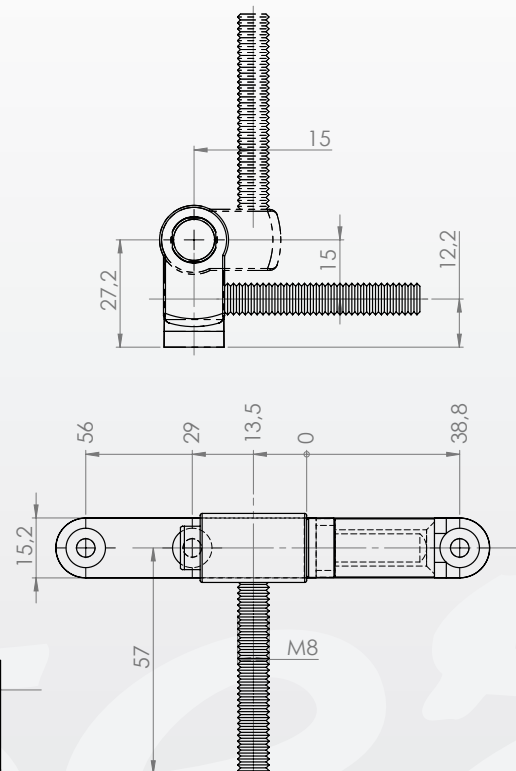
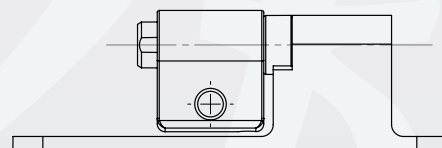
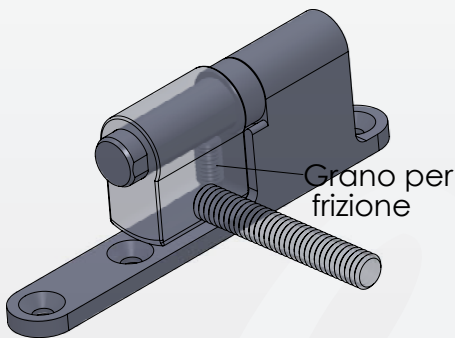
CODICE ARTICOLO NUOVO	VECCHIO	D(mm)	QTY.
MFC208001.02		11	1
MFC208002.02		14	1
MFC208003.02		16	1



## NISLEY

CODICE ARTICOLO NUOVO	VECCHIO	COLORE	QTY.
MFC209001.01	RUCERN01	NERO	R 20
MFC209002.01	RUCERN02	NERO	L 20

NOTA: nelle immagini vediamo la cerniera NISLEY sinistra (L)

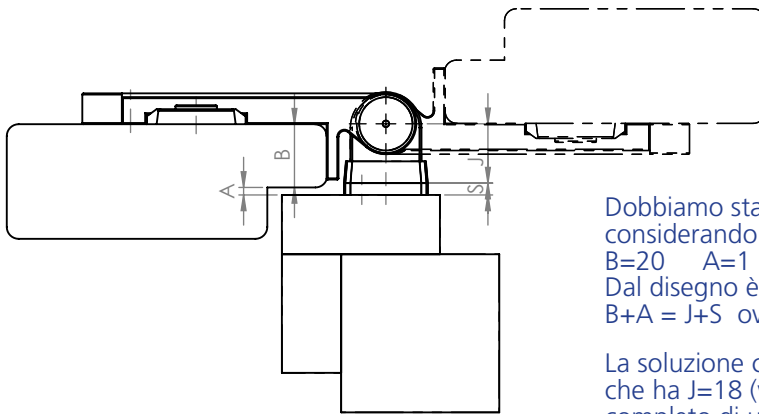


Cerniere e cardini serie  
Athena e Nisley

FABBRICA FERRAMENTA PER INFISSI  
38079 TIONE DI TRENTO | Via fabbrica, 54 | Tel. 0465.321134 | Fax 0465.324091 | info@metalfez.info

**Metalfez**

# ESEMPI APPLICAZIONE



Dobbiamo stabilire il cardine su piastra da utilizzare considerando i seguenti dati:

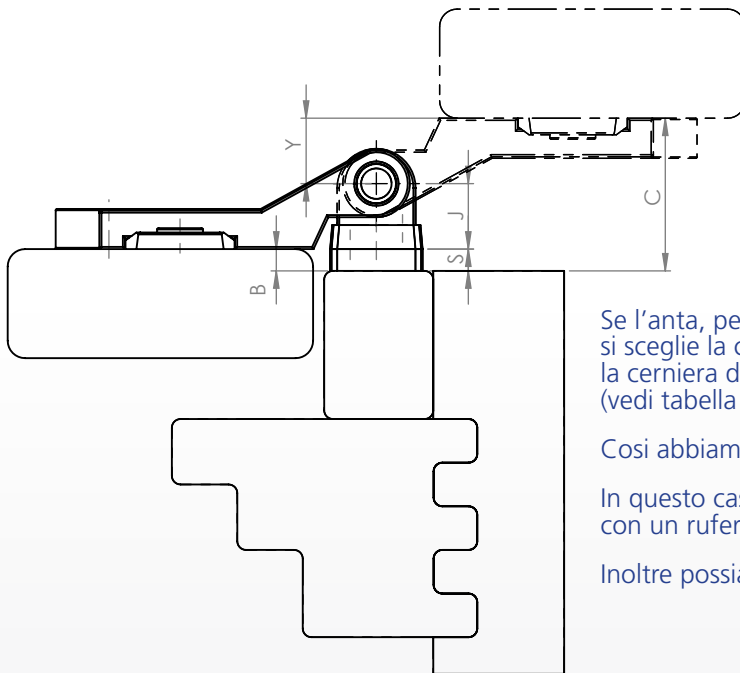
$B=20$   $A=1$

Dal disegno è facile dedurre che:

$B+A = J+S$  ovvero  $J+S=21$

La soluzione ci porta a scegliere un RUCARD23/17 che ha  $J=18$  (vedi tabella cardini su piastra) completo di uno spessore RUFERM30 ( $S=3\text{mm}$ ) (vedi tabella spessore per cardine)

In alternativa si può utilizzare un RUCARD 23/15 ( $J=16$ ) con uno spessore RUFERM28 ( $S=5$ )

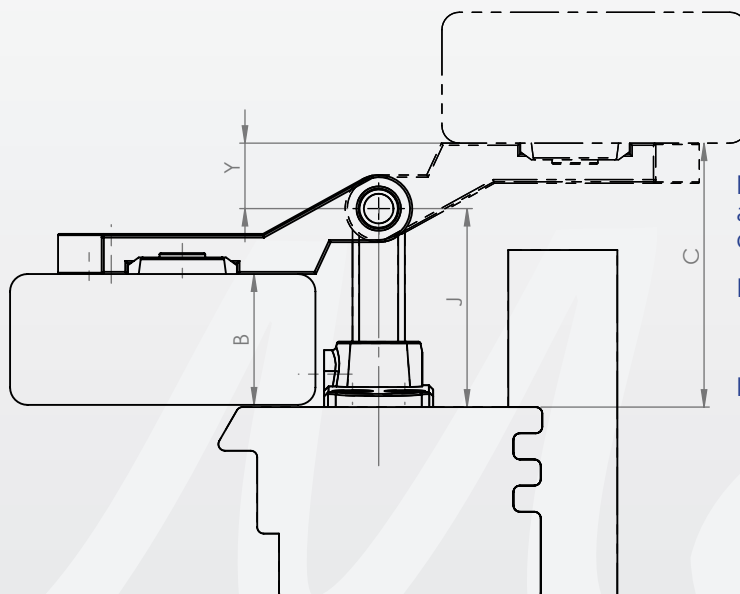


Se l'anta, per ipotesi, dovesse sormontare di 3mm ( $B=3$ ) si sceglie la cerniera a filo poiché il piano di appoggio della cerniera dista di 15mm ( $Y=15$ ) dal foro centro cardine (vedi tabella cerniere a filo).

Così abbiamo:  $B+Y=J+S$  ovvero  $J+S=18$

In questo caso scegliamo un rucard23/14 dove  $J=15$  con un ruferm30 dove  $S=3$

Inoltre possiamo dire che:  $C=J+S+Y$  ovvero  $C=33$



Nell'ipotesi dovessimo avere un'anta a sormonto totale ( $B=44\text{mm}$ ) con una cerniera a filo è facile risalire al valore di C.

Ricordiamo che  $Y=15\text{mm}$  per le cerniere a filo

Infatti:  $J = B+Y$  ovvero  $J=59\text{mm}$

$C=J+Y$  ovvero  $C=74\text{mm}$